

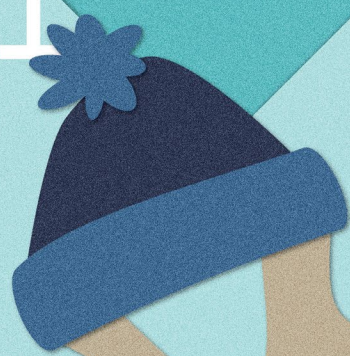
Welcome!



PLEASE STAY

← --- 6 FEET * --- →
APART

Moose lose their antlers
in the winter and grow
new ones each spring.



* The antlers of a bull
moose can grow up to
6 feet across! Please
social distance even
farther from moose.

SOCIAL
DISTANCING
SAVES
LIVES!

Adirondack Advice:
Never challenge a moose
to a snowball fight.



**ADIRONDACK
EXPERIENCE**
SMALL TOWNS — BIG OUTDOORS
adirondacks.usa

Powered by
ROOST