

Welcome!

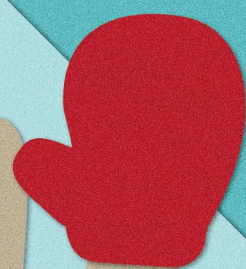


PLEASE STAY

←----- 6 FEET* -----→
APART



Moose lose their antlers
in the winter and grow
new ones each spring.



* The antlers of a bull
moose can grow up to
6 feet across! Please
social distance even
farther from moose.

SOCIAL
DISTANCING
SAVES
LIVES!

Adirondack Advice:
Never challenge a moose
to a snowball fight.



ADIRONDACK HUB

Powered by
ROOST